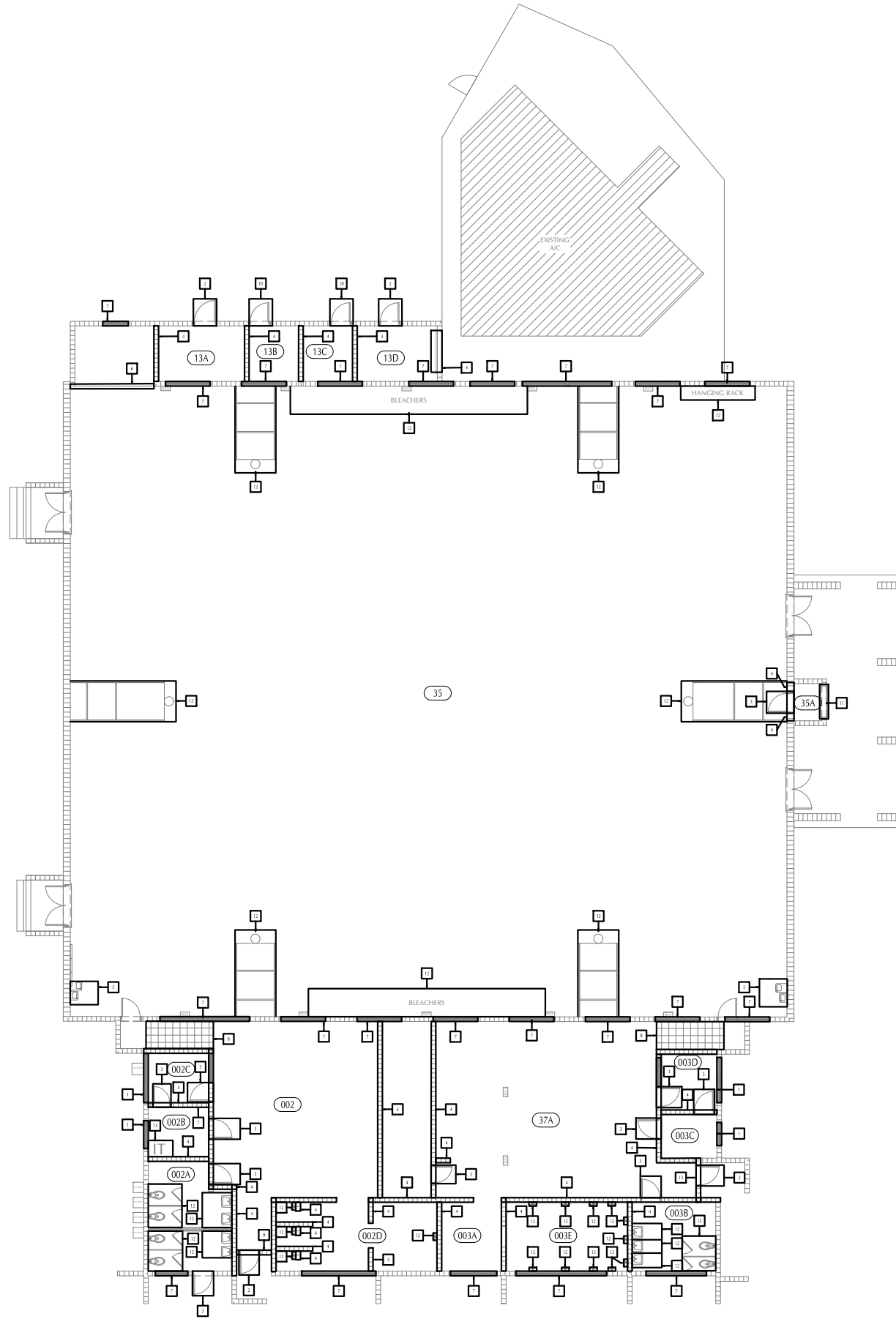


DEMOLITION KEY NOTES	
NO.	DEMOLITION DESCRIPTION
1	DEMO EXISTING WINDOWS. INFILL OPENING
2	DEMO EXISTING DOOR & INFILL OPENING.
3	DEMO EXISTING DOOR.
4	DEMO EXISTING WALL.
5	DEMO EXISTING WATER FOUNTAIN
6	DEMO EXISTING CHAINLINK FENCE.
7	DEMO EXISTING EXTERIOR WINDOWS, AND REPLACE.
8	DEMO EXISTING RAMP AND MAKE FLOOR LEVEL.
9	DEMO EXISTING WALL, INFILL OPENING
10	DEMO EXISTING DOORS, REPLACE WITH DOUBLE DOOR
11	DEMO ROLL-UP DOOR, REPLACE WITH WINDOW
12	DEMO AND REMOVE EXISTING FIXTURE
13	DEMO EXISTING I.T. DATA BOX



1
D101

DEMOLITION FLOOR PLAN

SCALE: NTS

Project: LAKE TECH - LINCOLN PARK REMODEL
680 E HIGHLAND AVE., CLERMONT, FLORIDA 34711

Revisions:

NOT FOR CONSTRUCTION

COPYRIGHT ©2021
GATORSKETCH CORPORATION.
THIS DRAWING IS PROTECTED BY COPYRIGHT LAWS OF THE UNITED STATES. NO PART OF THIS DESIGN OR THIS DOCUMENT, INCLUDING ELECTRONIC MEDIA, MAY BE REPRODUCED, TRANSCRIBED, COPIED, OR OTHERWISE USED FOR CONSTRUCTION PURPOSES WITHOUT EXPRESSED WRITTEN PERMISSION OF THE DESIGN PROFESSIONAL. VIOLATORS WILL BE SUBJECT TO LEGAL PROSECUTION TO THE FULLEST EXTENT OF THE LAW



1000 EAST HWY 50 SUITE 201A, CLERMONT, FL 34711
PH: (407)608-5677 FAX: (888)599-4814
Web Site: www.gatorsketch.com

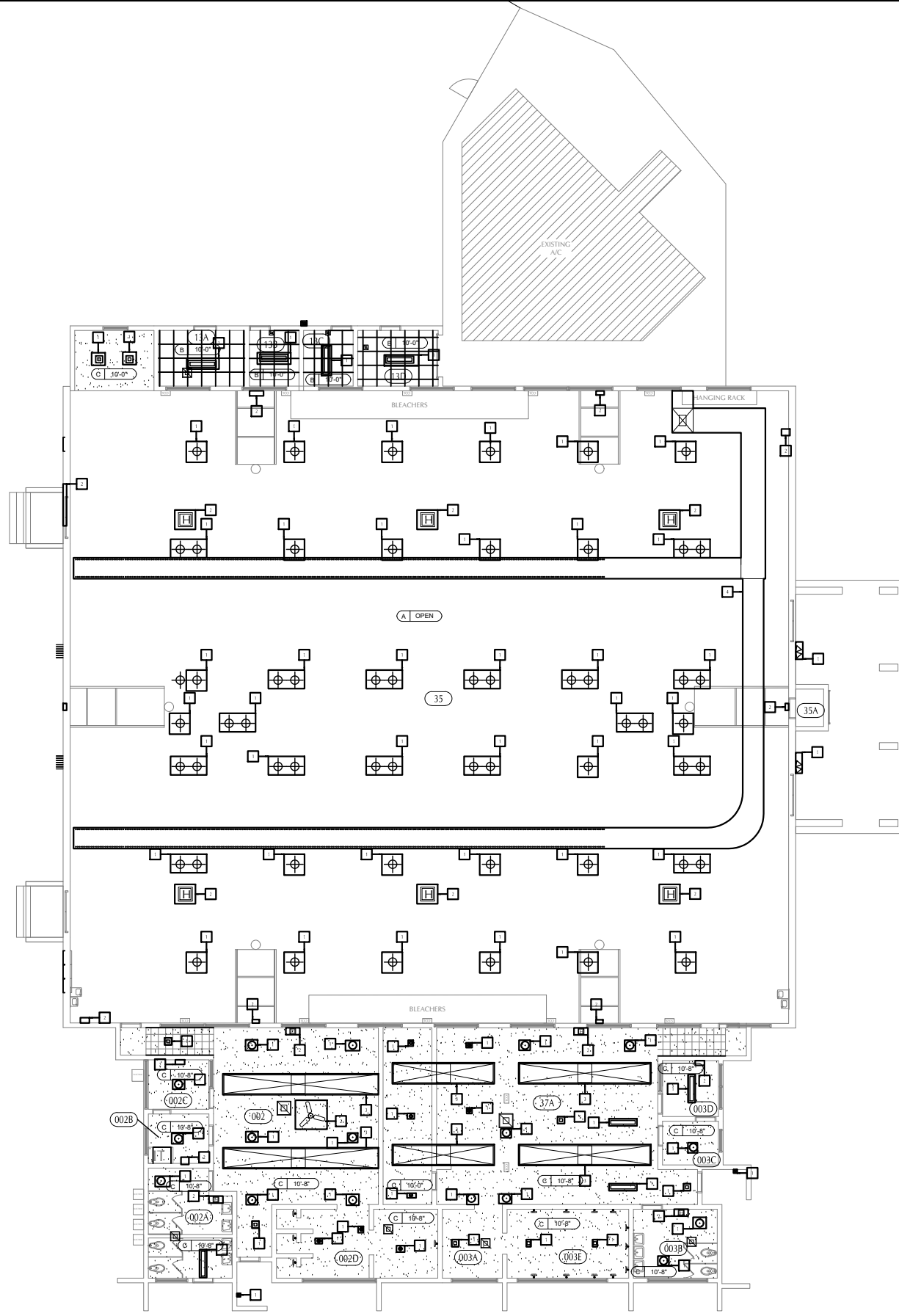
DEMOLITION FLOOR PLAN

D101

Job #: GC-24-006

DATE: 7/30/2024

DEMOLITION KEY NOTES	
NO.	DEMOLITION DESCRIPTION
1	DEMO EXISTING LIGHT FIXTURE.
2	DEMO EQUIPMENT OR FIXTURE
3	DEMO EXISTING HVAC EQUIPMENT AND INFILL
4	DEMO EXISTING SOCK DUCT



1
D401

DEMOLITION REFLECTED CEILING PLAN

SCALE: NTS

DEM. REFI.
CEILING PLAN

D401

Job #: GC-24-006

DATE: 7/30/2024



AA26002310
1000 EAST HWY 50 SUITE 201A, CLERMONT, FL 34711
PH: (407)608-5677 FAX: (888)599-4814
Web Site: www.gatorsketch.com

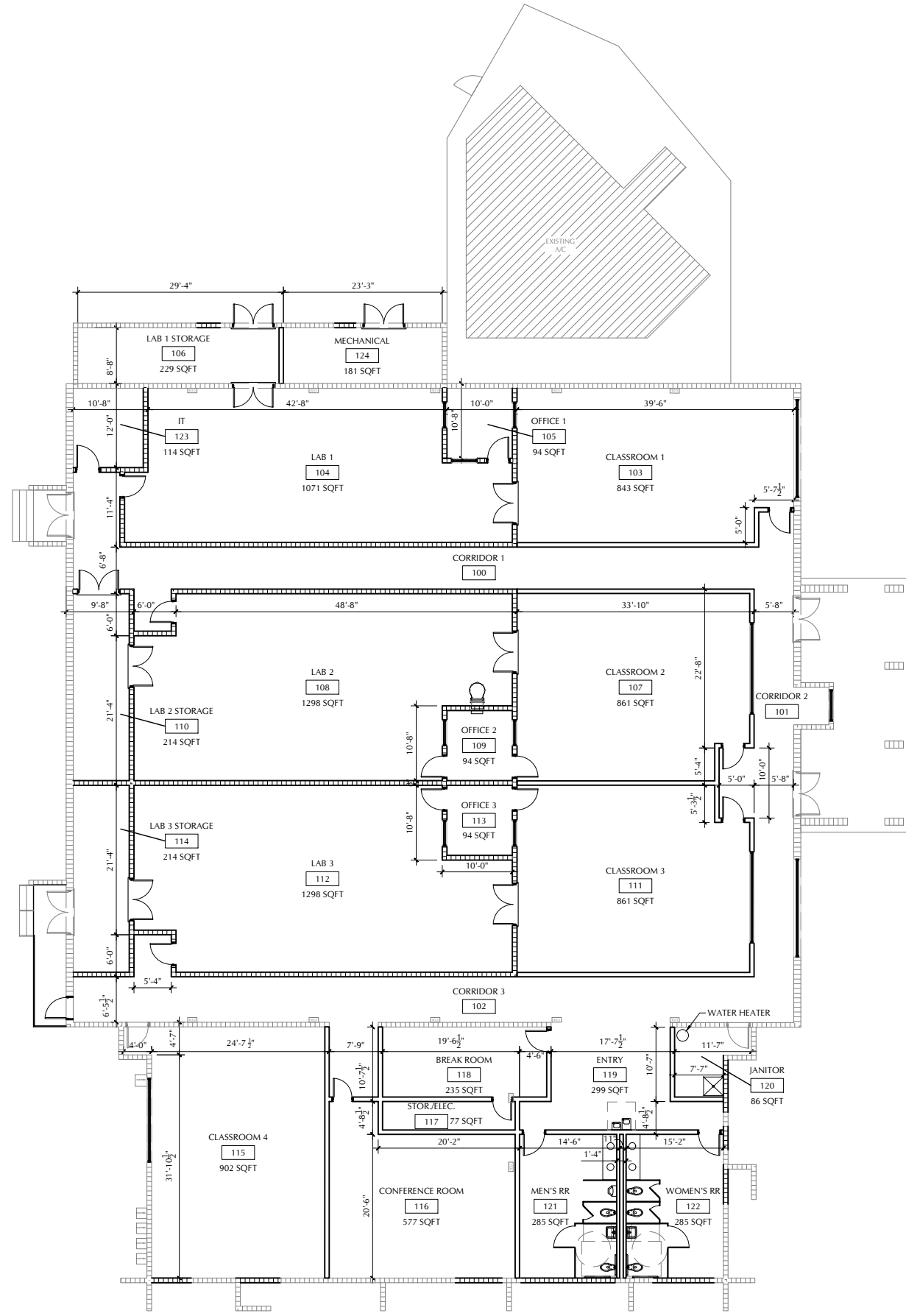
NOT FOR CONSTRUCTION

COPYRIGHT ©2021
GATORSKETCH CORPORATION.
THIS DRAWING IS PROTECTED BY COPYRIGHT LAWS OF THE
UNITED STATES. NO PART OF THIS DESIGN OR THIS
DOCUMENT, INCLUDING ELECTRONIC MEDIA, MAY BE
REPRODUCED, TRANSCRIBED, COPIED, OR OTHERWISE USED
FOR CONSTRUCTION PURPOSES WITHOUT EXPRESSED
WRITTEN PERMISSION OF THE DESIGN PROFESSIONAL.
VIOLATORS WILL BE SUBJECT TO LEGAL PROSECUTION TO
THE FULLEST EXTENT OF THE LAW

Project: LAKE TECH -

LINCOLN PARK REMODEL
680 E HIGHLAND AVE.
CLERMONT, FLORIDA 34711

Revisions:



1
A101
1ST FLOOR PLAN
 SCALE: NTS

Project: LAKE TECH - LINCOLN PARK REMODEL
 680 E HIGHLAND AVE.
 CLERMONT, FLORIDA 34711

Revisions:

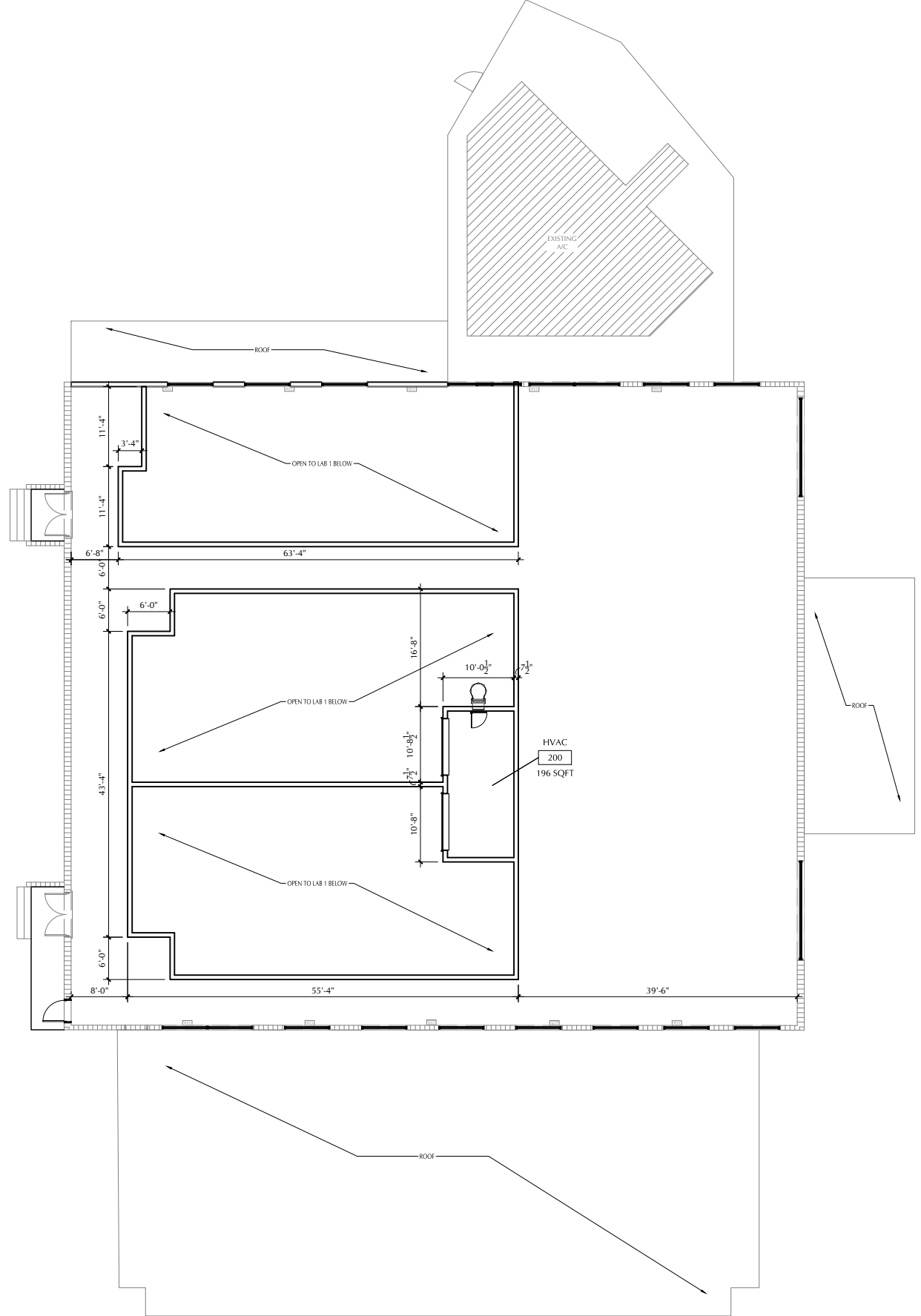
NOT FOR CONSTRUCTION

COPYRIGHT © 2021
 GATORSKETCH CORPORATION.
 THIS DRAWING IS PROTECTED BY COPYRIGHT LAWS OF THE UNITED STATES. NO PART OF THIS DESIGN OR THIS DOCUMENT, INCLUDING ELECTRONIC MEDIA, MAY BE REPRODUCED, TRANSCRIBED, COPIED, OR OTHERWISE USED FOR CONSTRUCTION PURPOSES WITHOUT EXPRESSED WRITTEN PERMISSION OF THE DESIGN PROFESSIONAL. VIOLATORS WILL BE SUBJECT TO LEGAL PROSECUTION TO THE FULLEST EXTENT OF THE LAW.



AA26002310
 1000 EAST HWY 50 SUITE 201A, CLERMONT, FL 34711
 PH: (407)608-5677 FAX: (888)599-4814
 Web Site: www.gatorsketch.com

1ST FLOOR
 PLAN
A101
 Job #: GC-24-006
 DATE: 7/30/2024



1
A102

MEZZANINE FLOOR PLAN
SCALE: NTS

MEZZANINE
FLOOR PLAN
A102
Job #: GC-24-006

DATE: 7/30/2024

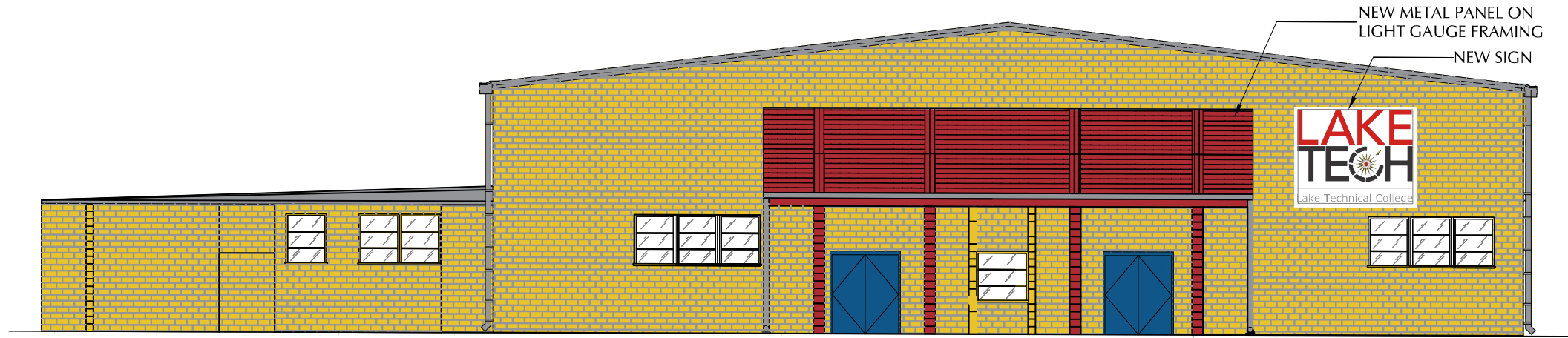
GatorSketch
ARCHITECTS & PLANNERS
AA26002310
1000 EAST HWY 50 SUITE 201A, CLERMONT, FL 34711
PH: (407)608-5677 FAX: (888)599-4814
Web Site: www.gatorsketch.com

NOT FOR CONSTRUCTION

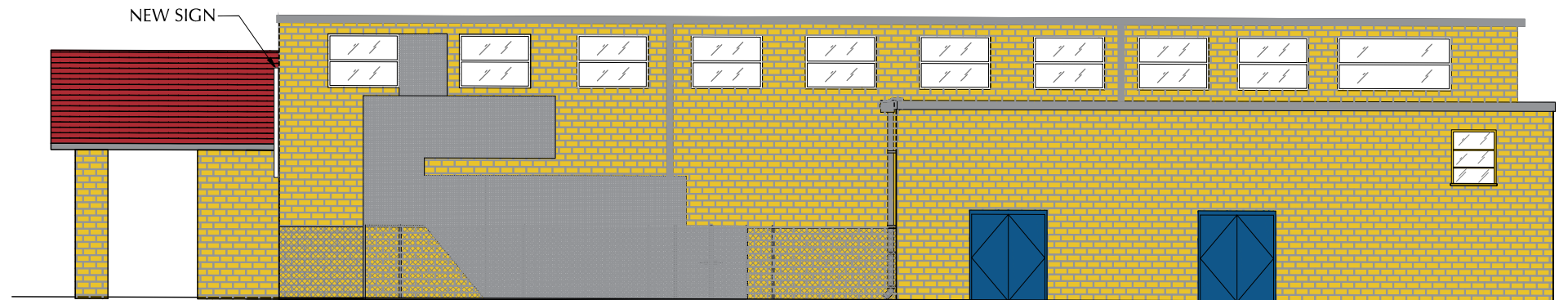
COPYRIGHT ©2021
GATORSKETCH CORPORATION.
THIS DRAWING IS PROTECTED BY COPYRIGHT LAWS OF THE
UNITED STATES. NO PART OF THIS DESIGN OR THIS
DOCUMENT, INCLUDING ELECTRONIC MEDIA, MAY BE
REPRODUCED, TRANSCRIBED, COPIED, OR OTHERWISE USED
FOR CONSTRUCTION PURPOSES WITHOUT EXPRESSED
WRITTEN PERMISSION OF THE DESIGN PROFESSIONAL.
VIOLATORS WILL BE SUBJECT TO LEGAL PROSECUTION TO
THE FULLEST EXTENT OF THE LAW

Project: LAKE TECH -
LINCOLN PARK REMODEL
680 E HIGHLAND AVE,
CLERMONT, FLORIDA 34711

Revisions:



1 EAST ELEVATION
A201 SCALE: NTS



2 NORTH ELEVATION
A201 SCALE: NTS

Project: LAKE TECH - LINCOLN PARK REMODEL
680 E HIGHLAND AVE.
CLERMONT, FLORIDA 34711

Revisions:

NOT FOR CONSTRUCTION

COPYRIGHT ©2021
GATORSKITCH CORPORATION.
THIS DRAWING IS PROTECTED BY COPYRIGHT LAWS OF THE
UNITED STATES. NO PART OF THIS DESIGN OR THIS
DOCUMENT, INCLUDING ELECTRONIC MEDIA, MAY BE
REPRODUCED, TRANSCRIBED, COPIED, OR OTHERWISE USED
FOR CONSTRUCTION PURPOSES WITHOUT EXPRESS USE
OF WRITTEN PERMISSION OF THE DESIGN PROFESSIONAL.
VIOLATORS WILL BE SUBJECT TO LEGAL PROSECUTION TO
THE FULLEST EXTENT OF THE LAW



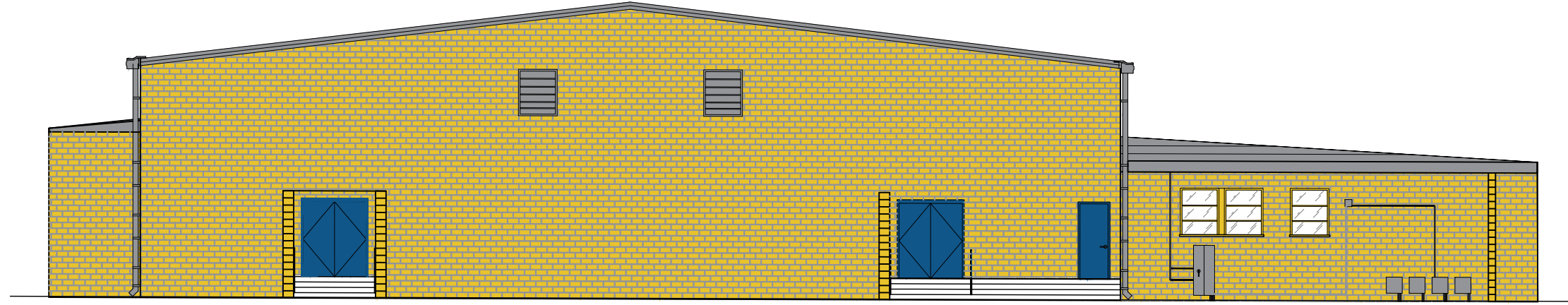
AA26002310
1000 EAST HWY 50 SUITE 201A, CLERMONT, FL 34711
PH: (407)608-5677 FAX: (888)599-4814
Web Site: www.gatorskitch.com

EXTERIOR
ELEVATIONS

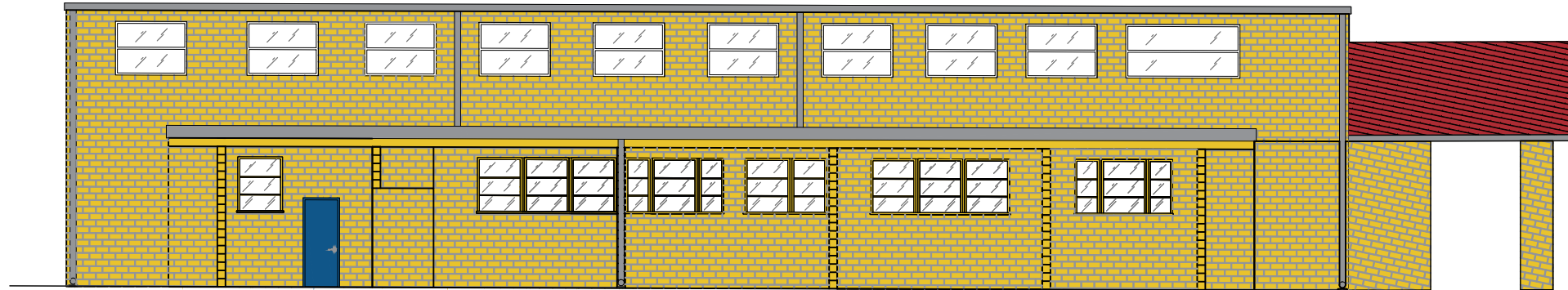
A201

Job #: GC-24-006

DATE: 7/30/2024



1
A202 WEST ELEVATION
SCALE: NTS



2
A202 SOUTH ELEVATION
SCALE: NTS

Project: LAKE TECH -
LINCOLN PARK REMODEL
680 E HIGHLAND AVE.
CLERMONT, FLORIDA 34711

Revisions:

NOT FOR CONSTRUCTION

COPYRIGHT ©2021
GATORSKETCH CORPORATION.
THIS DRAWING IS PROTECTED BY COPYRIGHT LAWS OF THE
UNITED STATES. NO PART OF THIS DESIGN OR THIS
DOCUMENT, INCLUDING ELECTRONIC MEDIA, MAY BE
REPRODUCED, TRANSCRIBED, COPIED, OR OTHERWISE USED
FOR CONSTRUCTION PURPOSES WITHOUT EXPRESSED
WRITTEN PERMISSION OF THE DESIGN PROFESSIONAL.
VIOLATORS WILL BE SUBJECT TO LEGAL PROSECUTION TO
THE FULLEST EXTENT OF THE LAW



AA26002310
1000 EAST HWY 50 SUITE 201A, CLERMONT, FL 34711
PH: (407)608-5677 FAX: (888)599-4814
Web Site: www.gatorsketch.com

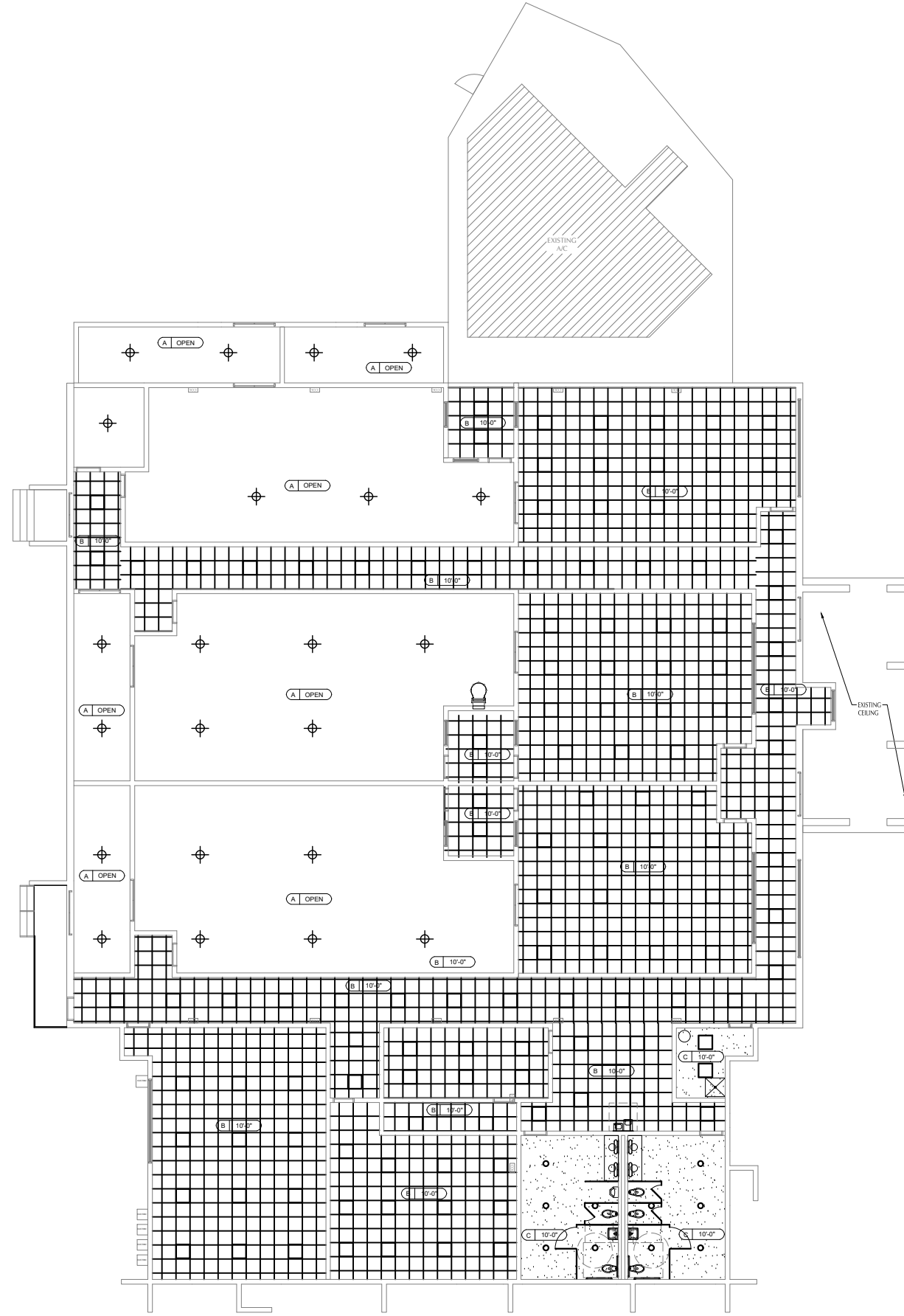
EXTERIOR
ELEVATIONS

A202

Job #: GC-24-006

DATE: 7/30/2024

REFLECTED CEILING PLAN SYMBOL LEGEND	
	ONE HOUR RATED FIRE PARTITION
	TWO HOUR RATED FIRE PARTITION
	SMOKE TIGHT PARTITION
	EXIT LIGHT
	SMOKE DETECTOR
	FIRE EXTINGUISHER IN CABINET
	FIRE ALARM PULL STATION
	FIRE ALARM HORN & LIGHT
	FLASHING ALARM BEACON
	ELECTROMAGNETIC DOOR HOLD-OPEN
	INCANDESCENT LIGHTING ON EMERG. POWER
	INCANDESCENT LIGHTING
	SURFACE MT. INCANDESCENT LIGHTING
	ACCESS PANEL
	FLUORESCENT LIGHT FIXTURE
	FLUORESCENT LIGHT FIXTURE
	HVAC SUPPLY
	HVAC RETURN
	EXIT LIGHT & EMER. POWER PACK LIGHTING (CEILING MOUNTED)
	EMERGENCY LIGHTING
	ILLUMINATED EXIT SIGN



1
A801

1ST FLOOR REFLECTED CEILING PLAN

SCALE: NTS

1ST FL. REFL.
CEILING PLAN

A801

Job #: GC-24-006

DATE: 7/30/2024

GatorSketch
ARCHITECTS & PLANNERS

AA26002310
1000 EAST HWY 50 SUITE 201A, CLERMONT, FL 34711
PH: (407)608-5677 FAX: (888)599-4814
Web Site: www.gatorsketch.com

NOT FOR CONSTRUCTION

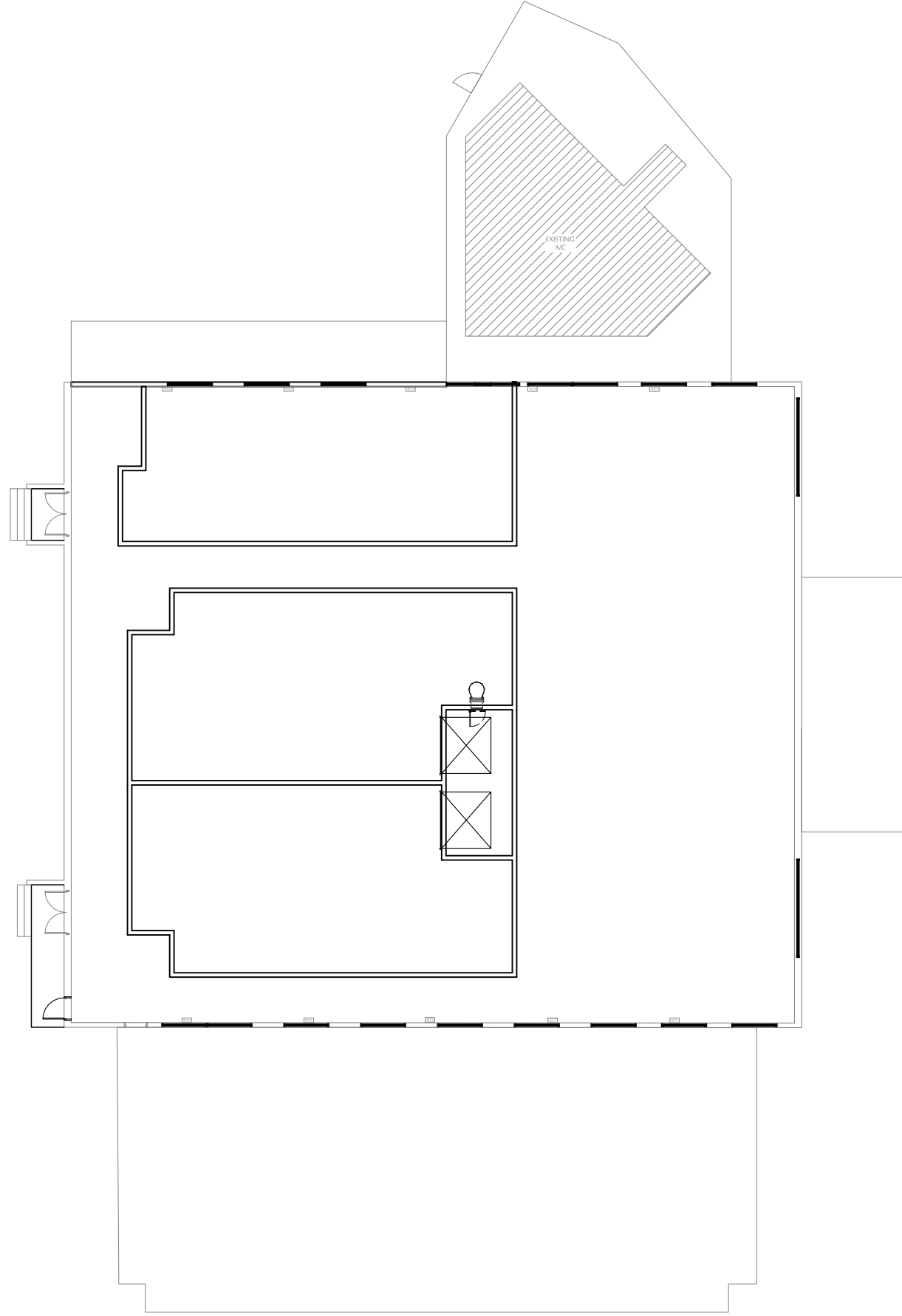
COPYRIGHT ©2021
GATORSKETCH CORPORATION.
THIS DRAWING IS PROTECTED BY COPYRIGHT LAWS OF THE
UNITED STATES. NO PART OF THIS DESIGN OR THIS
DOCUMENT, INCLUDING ELECTRONIC MEDIA, MAY BE
REPRODUCED, TRANSCRIBED, COPIED, OR OTHERWISE USED
FOR CONSTRUCTION PURPOSES WITHOUT EXPRESSED
WRITTEN PERMISSION OF THE DESIGN PROFESSIONAL.
VIOLATORS WILL BE SUBJECT TO LEGAL PROSECUTION TO
THE FULLEST EXTENT OF THE LAW

Project: LAKE TECH -

LINCOLN PARK REMODEL
680 E HIGHLAND AVE.
CLERMONT, FLORIDA 34711

Revisions:

REFLECTED CEILING PLAN SYMBOL LEGEND	
	ONE HOUR RATED FIRE PARTITION
	TWO HOUR RATED FIRE PARTITION
	SMOKE TIGHT PARTITION
	EXIT LIGHT
	SMOKE DETECTOR
	FIRE EXTINGUISHER IN CABINET
	FIRE ALARM PULL STATION
	FIRE ALARM HORN & LIGHT
	FLASHING ALARM BEACON
	ELECTROMAGNETIC DOOR HOLD-OPEN
	INCANDESCENT LIGHTING ON EMERG. POWER
	INCANDESCENT LIGHTING
	SURFACE MT. INCANDESCENT LIGHTING
	ACCESS PANEL
	FLUORESCENT LIGHT FIXTURE
	HVAC SUPPLY
	HVAC RETURN
	EXIT LIGHT & EMER. POWER PACK LIGHTING (CEILING MOUNTED)
	EMERGENCY LIGHTING
	ILLUMINATED EXIT SIGN



1
A802

MEZZANINE REFLECTED CEILING PLAN

SCALE: NTS

MEZZ. REFL.
CEILING PLAN

A802

Job #: GC-24-006

DATE: 7/30/2024

GatorSkitch
ARCHITECTS & PLANNERS

AA26002310
1000 EAST HWY 50 SUITE 201A, CLERMONT, FL 34711
PH: (407)608-5677 FAX: (888)599-4814
Web Site: www.gatorskitch.com

NOT FOR CONSTRUCTION

COPYRIGHT ©2021
GATORSKITCH CORPORATION.
THIS DRAWING IS PROTECTED BY COPYRIGHT LAWS OF THE
UNITED STATES. NO PART OF THIS DESIGN OR THIS
DOCUMENT, INCLUDING ELECTRONIC MEDIA, MAY BE
REPRODUCED, TRANSCRIBED, COPIED, OR OTHERWISE USED
FOR CONSTRUCTION PURPOSES WITHOUT EXPRESSED
WRITTEN PERMISSION OF THE DESIGN PROFESSIONAL.
VIOLATORS WILL BE SUBJECT TO LEGAL PROSECUTION TO
THE FULLEST EXTENT OF THE LAW

Project: LAKE TECH -

LINCOLN PARK REMODEL
680 E HIGHLAND AVE.
CLERMONT, FLORIDA 34711

Revisions: